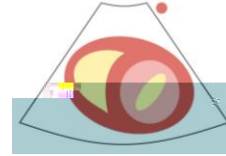




Education lead BANCC



Introduction

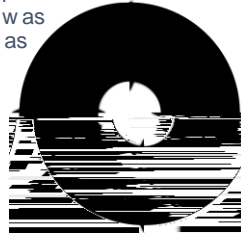
The number of patients >65 years living with valvular heart disease in the UK is predicted to double to 3 million between 2015 and 2046 and

Specialist valve clinics improve patient outcomes and reduce the number of unnecessary echocardiograms (Ionescu, McKenzie et al. 2015).

Current practice at SWFT is for valve patients to be followed up in general cardiology clinics with the timing of imaging at the discretion of the treating cardiologist.

METHODS

A key stakeholder meeting was arranged with the general manager for cardiology, imaging lead cardiologist and 2 ACPs, 1 British Society of Echocardiography (BSE) accredited, 1 in training. The development of a valve clinic was agreed in principle and potential funding was identified via the NHS heart valve disease



OBJECTIVES

Develop a trial of a combined valve surveillance and echo clinic.

Improve the quality of care and valve imaging through an MDT approach.

Build a business case for a comprehensive local valve service.

